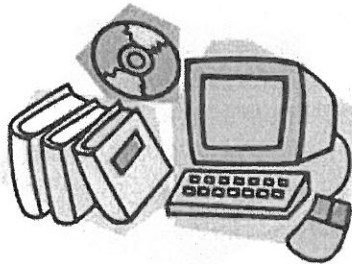


Morgan Hill Community Adult School Rules

Campus Rules

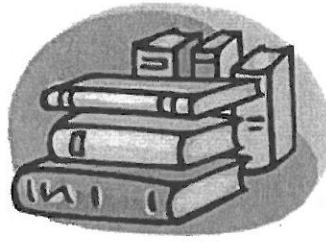
- You may not enter the grounds of Britton Middle School or interact with any student at Britton Middle School at anytime, unless it is with your own child enrolled at Britton Middle School.
- Park only in Adult School parking lots. You may park in the Britton Middle School parking lot after 6:00 PM.
- You may not smoke anywhere on campus, including the Adult School and Britton Middle School parking lots.
- Visitors must check in at the school's office. Friends and family are not allowed to attend class sessions. They may come to pick you up, if necessary, but they may not stay.
- Throw trash in the garbage cans.
- Help keep the restrooms neat and clean.

Classroom Conduct



- Be considerate of others. Treat everyone, staff and students, with courtesy and respect.
- Do not play MP3 players or compact discs at a volume that disturbs other students.
- Please help keep the classroom tidy.
- No drinks are allowed next to computers.
- No food is allowed in the classroom. Teachers may give students permission to eat in class during break time and on special occasions.
- Students who need to eat during class time because of any medical issues must ask permission from the teacher.
- Come into the classroom quietly and on time. Punctuality and regular attendance are required of all students.
- You are part of a class. You are expected to participate in all classroom activities.





Grounds for Instant Dismissal

- Coming to school under the influence of drugs or alcohol.
- Possessing alcohol, drugs, or weapons (including knives).
- Threatening or harassing another person.
- Committing any act of sexual harassment or misconduct.
- Writing graffiti.
- Destroying, stealing, or damaging property belonging to the school or another person.
- Using foul or abusive language or gestures.
- Entering the Britton Middle School Campus or interacting with Britton Middle School Students.

Student Dress Policy

- All clothes should be in good taste and appropriate for school.
- Common, non-offensive standards for dress shall be enforced throughout the campus. Statements or graphics depicting violence, drugs, alcohol, gang affiliation, or sexual or racially demeaning situations are not allowed.
- No hats or head coverings are allowed on campus, except as required by religious groups.
- No gang attire or paraphernalia.



Phone Usage

- Students are not allowed to use cell phones in the classrooms during class times.
- Answering cell phones or text messaging is not allowed inside the classroom.
- Cell phones must be kept inside a purse, pocket, or backpack. No cell phones are allowed on the classroom tables.
- Cell phones may be used outside of classrooms – during break times or lunch.

